

# 祐 徳

SAGA KASHIMA

## Welcome to YUTOKU

Yutoku Inari Shrine

Yutoku Monzen Shopping Street

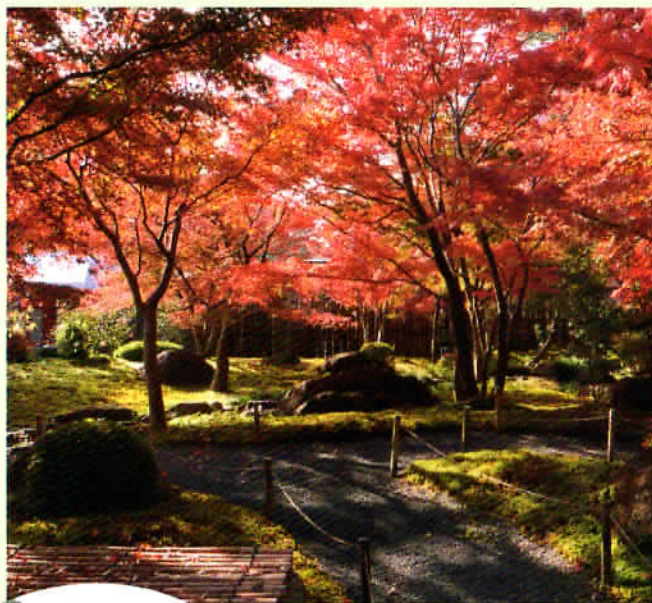
## Guide Map

### Yutoku Inari Shrine 祐徳稲荷神社

The Yutoku Inari Shrine is one of the three most famous shrines dedicated to Inari. Over three million people visit the shrine every year to pray for good business, good fortune for their families, a large catch, traffic safety and other matters. It consists of the Gohonden, the Okaguraden, the gate, and other magnificent buildings, which are lacquered and colored gorgeously; it is called Nikko Toshogu Shrine in Kyushu. It is also famous a film location recently.







### Japanese Garden 日本庭園

There is a Japanese style garden including a small flowing brook and a pond with a bridge. A variety of flowers are bloomed all year round, and the leaves in autumn are also beautiful. You can take a leisurely walk here as you enjoy the seasons.



Japanese Garden  
日本庭園



### Omikuji (Fortune Slips) おみくじ

"Omikuji" contain predictions about your fortune (good or bad) as well as advice. They are available in (five) foreign languages.



### Japanese sake (rice wine) 日本酒

Kashima sake is "rich" and "sweet." It is known for its strong flavor that fills your mouth. Kashima sake is highly praised both domestically and abroad as the best sake in World.



### Inari Yohkan (Sweet Bean Jelly) 稲荷ようかん

You eat it by pushing up on the bottom of the tube filled with sweet bean jelly, which causes the jelly to come out of the other end, and then using a piece of string to cut the jelly into the size you want.



### Yuzu-kosho 柚子こしょう

Redpeppers chili spice which has a flavor of citron. It's good for steak.



### Nogomi Dolls のごみ人形

These are simple ceramic bells made in the motifs of things found locally as well as in the shapes of cute Chinese-zodiac animals. The dolls are popular as charms to dispel evil spirits and as good luck charms.



### Carp Dishes 鯉料理

Koi-no-arai "carp sashimi" and Koi-koku "carp miso soup" are traditional dishes which are good for beauty and health.



### Easy-to-wear rental Kimono dressing experience. かんたん着物体験

☎ 080-1532-3240 Mail: monzen@po.asunet.ne.jp

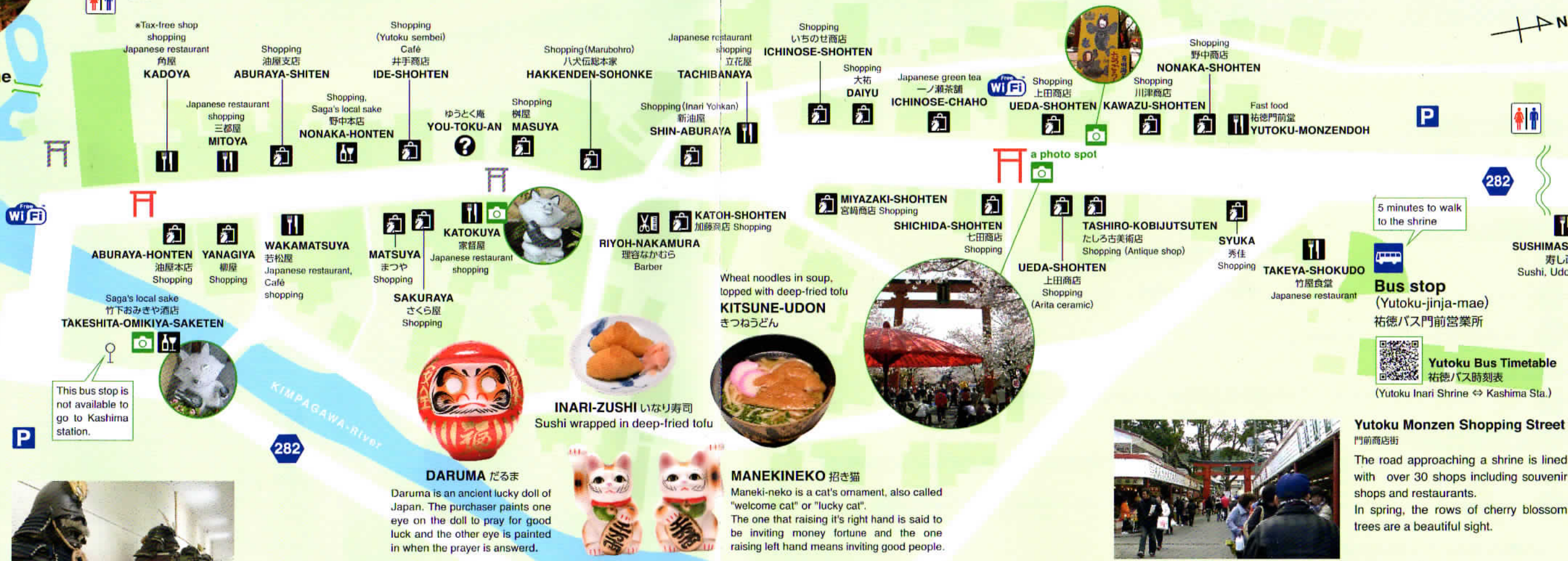


### Yutoku Sembei

(Sweet cracker) 祐徳せんべい

Old-fashioned handmade Sweet crackers. Ginger flavored "Shoga Sembei" is popular.

### Yutoku Inari Shrine 祐徳稲荷神社



### Yutoku Museum 祐徳博物館

Kashima Nabeshima clan  
The valuable items such as armor and sword used by the lord of the successive lord line up.  
Open. 9:00 - 16:30



### DARUMA だるま

Daruma is an ancient lucky doll of Japan. The purchaser paints one eye on the doll to pray for good luck and the other eye is painted in when the prayer is answered.



### MANEKINEKO 招き猫

Maneki-neko is a cat's ornament, also called "welcome cat" or "lucky cat". The one that raising it's right hand is said to be inviting money fortune and the one raising left hand means inviting good people.

### Yutoku Monzen Shopping Street 門前商店街

The road approaching a shrine is lined with over 30 shops including souvenir shops and restaurants. In spring, the rows of cherry blossom trees are a beautiful sight.



# Yutoku Monzen Shopping Street



## KASHIMA access



## Kashima City Tourist information office

Phone 0954-60-5145  
info@kashima-kankou.com  
http://kashima-kankou.com

## Yutoku Monzen Shopping Street

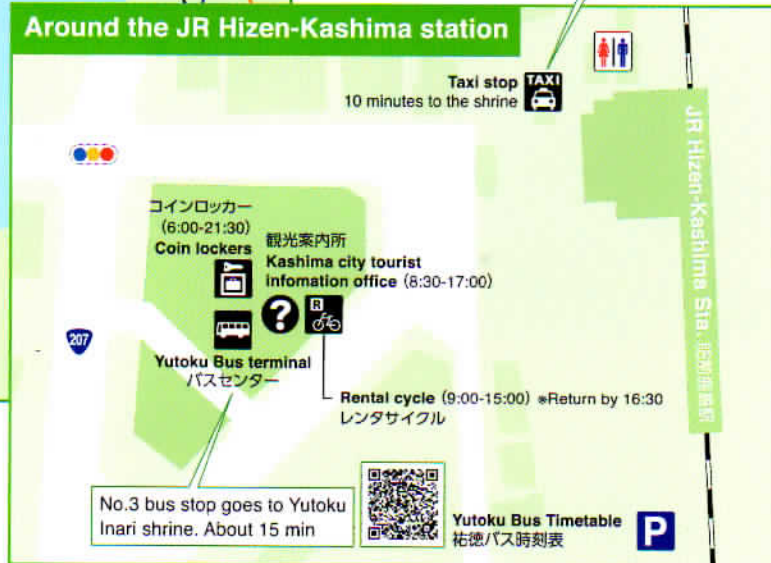
monzen@po.asunet.ne.jp  
https://www.kashimacity.com/monzen.htm  
https://www.facebook.com/yutokumonzen/

## Yutoku Inari Shrine

Phone 0954-62-2151  
https://www.yutokusan.jp/en/

You will be Yutoku-Inari-Shrine about 10 min by taxi. It cost about 1,600 yen, up to 4 people.

## Around the JR Hizen-Kashima station

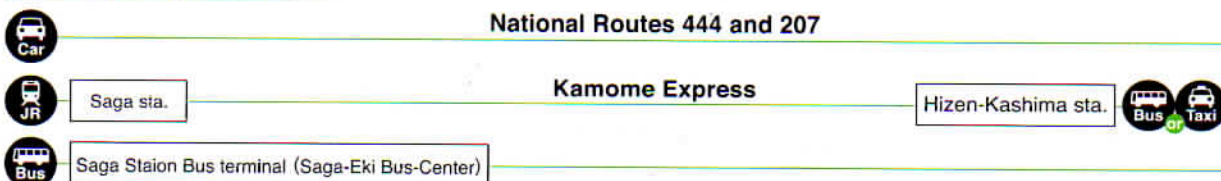


## Access to Yutoku Inari Shrine

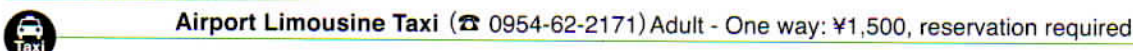
### from Fukuoka



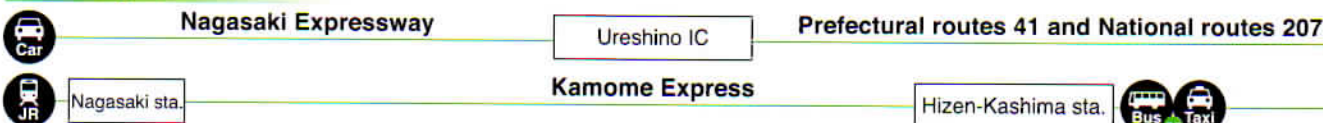
### from Saga city



### from Saga Airport



### from Nagasaki



## Transportation information

Bus Yutoku Bus ☎ 0954-69-8077

Taxi Saikouan Taxi ☎ 0954-62-2171



JR Kyushu  
Hizen-Kashima Station ☎ 0954-62-2326



Car Rental  
Toyota rent-a-Lease  
Saga Kashima Branch ☎ 0954-62-2277

Yutoku Inari Shrine